

FITC Goat Anti-Mouse IgG(H+L)

Catalog Number	Vial Size
GM200G-02C	100 ug
GM200G-02E	500 ug



天津三箭生物技术股份有限公司
Tianjin Sungene Biotech Co., Ltd.
标准 高效 稳定 Precision Efficient Stable

Market | 400-621-0003
marketing@sungenebiotech.com

Support | 022-66211636-8024
techsupport@sungenebiotech.com

Web | www.sungenebiotech.com

Important Note: Centrifuge before opening to ensure complete recovery of vial contents.
This product is guaranteed up to one year from purchase.

Purified Antibody Characterization

Isotype	Reactivity
Polyclonal Goat IgG	Mouse

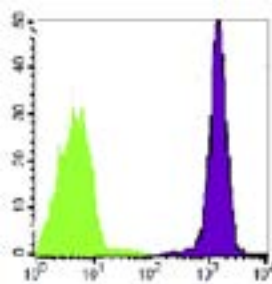
Description

Preparation: The polyclonal antibody was purified from goat antiserum by mouse IgG affinity chromatography.

Purity: >90% by SDS-PAGE

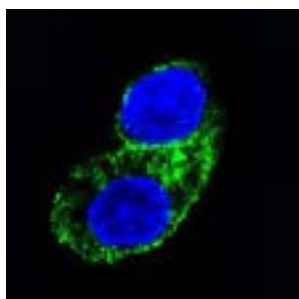
Specificity: The antibody reacts with whole molecule Mouse IgG. No antibody was detected against non-immunoglobulin serum proteins. The antibody may cross-react with immunoglobulins from other species.

Illustration of Immunofluorescent Staining

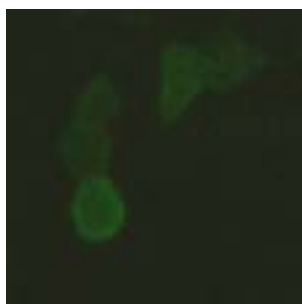


Log Fluorescence Intensity

Human peripheral blood lymphocytes stained with Purified mouse anti-human CD45 and FITC goat anti-mouse IgG(H+L)



Immunofluorescence Staining of HepG2 cell with primary antibody 125CT13.3.5 and FITC goat anti-mouse IgG(H+L) diluted at 1/50



Immunofluorescence Staining of HEK293 cell transfected with flag-tag fusion plasmid. The primary antibody is anti-Flag monoclonal antibody. The secondary antibody is FITC goat anti-mouse IgG(H+L) diluted at 1/100.

Product Information

Conjugation: FITC

Formulation: PBS pH 7.2, 0.09% NaN₃, 0.2% BSA

Concentration: 0.5 mg/ml

Storage: Keep as concentrated solution. Store at 4°C and protected from prolonged exposure to light. **Do not freeze.**

Application: FC (Flow Cytometry), IF(Immunofluorescent)

Usage: FC: The amount of the reagent is suggested to be used $\leq 1 \mu\text{g}/10^6$ cells .
IF: 1/50 ~ 1/100

Since applications vary, the appropriate dilutions must be determined for individual use.

For Research Use Only.